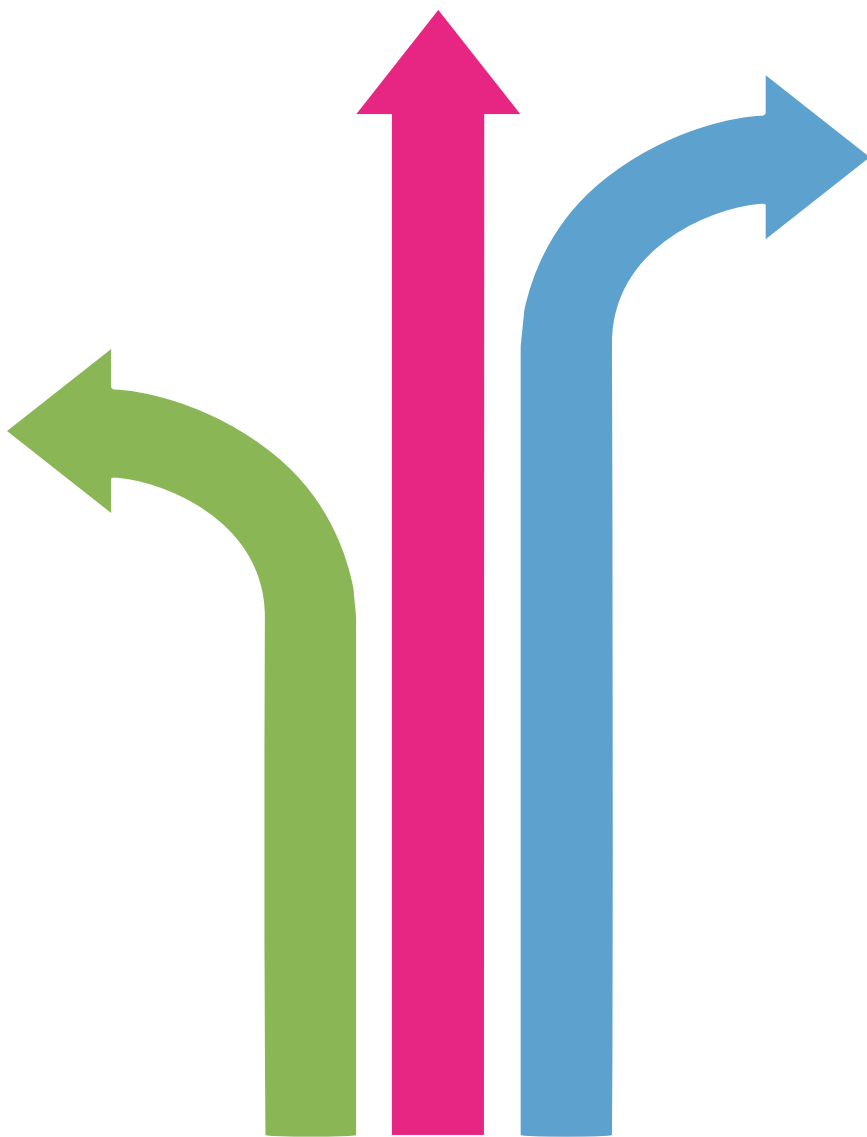


# **VOCATIONAL PATHWAYS**



HEREFORD Sixth Form College

***WHERE DO YOU WANT TO GO?***



# CONTENTS

BUSINESS	2
CREATIVE INDUSTRIES	3
CRIMINOLOGY	4
ENGINEERING	6
HEALTH & CARE	7
PERFORMING	8
	9
	11
	12
ARTS	
SPORT	
TRAVEL & TOURISM	
KEY DATES	



# VOCATIONAL PATHWAYS

If you are confident about which career path you want to take, or looking for courses with less emphasis on exams, our Vocational Pathways may be the route for you. These Pathways are designed with a clear destination in mind and take advantage of the more flexible assessment practices offered by vocational qualifications.

Hereford Sixth Form College is proud to have a 'create your own' approach to the Programme of Study, and these Vocational Pathways are no different. Each pathway will have suggestions for courses to choose from whilst being centred around a particular vocational course.

Results for vocational courses are consistently outstanding; in 2020, 100% of students studying BTEC qualifications receiving a pass or above. Hereford Sixth Form College candidates perform better than the average for the country; the average grade was a Distinction- whilst the national average is a Merit+.

The Vocational Pathways include recommendations for relevant enrichment activities and extension programmes to enhance employability and enrich the College experience. These include short courses, which are not examined, that teach students valuable life skills such as Emergency First Aid and Sign Language.

## SUITABLE FOR

To find out more information about individual courses, please visit our website.  
[www.hereford.ac.uk](http://www.hereford.ac.uk)

# BUSINESS

Students with a 4/5/6 or C/B in GCSE Mathematics.

## ASSESSMENTS

Vocational courses are assessed by coursework and examinations; check the details of each course on our website to determine if this is the right pathway for you.

## NEXT STEPS

This pathway could lead to:

- ▶ an **apprenticeship** in Business Administration, Customer Service, Human Resources, or Marketing

- ▶ a **foundation degree** in any business-related degree ▶ a **foundation year/year zero course** ▶ a **Higher National Diploma (HND)**
- ▶ a **degree**

## CAREER PROSPECTS

- ▶ Marketing
- ▶ Business Management
- ▶ Administration
- ▶ Sales

## PROGRAMME OF STUDY

BTEC NATIONAL EXTENDED CERTIFICATE

**Enterprise and Entrepreneurship**

BTEC NATIONAL EXTENDED CERTIFICATE

## Travel and Tourism

CHOOSE ONE FROM THE OPTIONS BELOW

A LEVEL

A LEVEL

## Business Statistics Information Technology

BTEC NATIONAL EXTENDED CERTIFICATE

## ENRICHMENT

EXTENSION PROGRAMME

## EPQ

## Sport Academy

## WHY NOT ADD...

EXTENSION PROGRAMME

## Mathematics for Life

## SUITABLE FOR

Creative students with a 4/5/6 or C/B in GCSE English.

## ASSESSMENTS

Vocational courses are assessed by coursework and examinations; check the details of each course on our website to determine if this is the right pathway for you.

## NEXT STEPS

This pathway could lead to:

- ▶ an **apprenticeship** in areas such as Production or Graphic Design ▶ a **foundation degree** in Media ▶ an **Arts Foundation Diploma** (Level 3)
- ▶ a **degree apprenticeship**

## CAREER PROSPECTS

- ▶ Media Production
- ▶ Digital Marketing
- ▶ Public Relations
- ▶ Content Producer

# CREATIVE INDUSTRIES

SUITABLE FOR  
PROGRAMME OF

# CRIMINOLOGY

## STUDY

A LEVEL

**Photography**

CAMBRIDGE TECHNICAL EXTENDED  
CERTIFICATE

**Digital Media Production**

CHOOSE ONE FROM THE OPTIONS BELOW

BTEC NATIONAL EXTENDED CERTIFICATE

**Computer Games  
Development and  
Cyber Security**

A LEVEL

**Media Studies**

## ENRICHMENT

**Student Voice  
Newspaper**

**Upstage Productions**

## WHY NOT ADD...

EXTENSION PROGRAMME

**EPQ**

Students with an interest in criminological professions with an average GCSE grade of 4 or C and above.

## ASSESSMENTS

Vocational courses are assessed by coursework and examinations; check the details of each course on our website to determine if this is the right pathway for you.

## NEXT STEPS

This pathway could lead to:

- ▶ a **degree in** Criminology and Psychology
- ▶ a **degree in** Criminology and Sociology
- ▶ a **diploma of Higher Education** in Criminology and Psychology/Law
- ▶ a Police Constable **degree**



**apprenticeship** ▶ a **degree**  
in Professional  
Policing

- ▶ an **apprenticeship** at  
MI5

## CAREER PROSPECTS

- ▶ Police Officer
- ▶ Probation Officer
- ▶ Prison Services

## PROGRAMME OF STUDY

WJEC LEVEL 3 DIPLOMA

**Criminology**

BTEC NATIONAL EXTENDED CERTIFICATE

**Applied Psychology**

A LEVEL

**Sociology**

EXTENSION PROGRAMME

**Mathematics for Life**

## ENRICHMENT

EXTENSION PROGRAMME

**EPQ**

## Short Courses

in Sign Language, HeartStart, and Emergency First Aid

## WHY NOT ADD...

## Short Courses

Free online courses such as those offered by the  
Open University

## SUITABLE FOR

# SCIENCE BASED CRIMINOLOGY

Students with an interest in criminological professions with an average GCSE grade of 4 or C and above.

## ASSESSMENTS

Vocational courses are assessed by coursework and examinations; check the details of each course on our website to determine if this is the right pathway for you.

## NEXT STEPS

This pathway could lead to:

- ▶ a **degree** in Criminology and Psychology
- ▶ a **degree** in Forensic Science and Criminology
- ▶ a Police Constable **degree apprenticeship**
- ▶ an **apprenticeship** in Forensic Science
- ▶ an **apprenticeship** at MI5
- ▶ a **degree** in

Criminology and Forensic Science

## CAREER PROSPECTS

- ▶ Police Officer
- ▶ Security
- ▶ Social Work

## PROGRAMME OF STUDY

WJEC LEVEL 3 DIPLOMA

**Criminology**

A LEVEL

**Psychology**

BTEC NATIONAL FOUNDATION DIPLOMA

**Forensic Science**

EXTENSION PROGRAMME

**Mathematics for Life**

## ENRICHMENT

## TABLE FOR

EXTENSION PROGRAMME

**EPQ**

### Short Courses

in Sign Language, HeartStart, and  
Emergency First Aid

### WHY NOT ADD...

### Short Courses

Free online courses such as those  
offered by the  
Open University

Zero course ▶ a Higher  
National Diploma  
(HND)

### CAREER PROSPECTS

- ▶ Manufacturing
- ▶ Civil Engineering
- ▶ Software Development
- ▶ Communications  
Engineering

### PROGRAMME OF STUDY

CAMBRIDGE TECHNICAL EXTENDED CERTIFICATE

**Engineering**

# ENGINEERING

Students with a GCSE grade  
4/5/6 or C/B in Mathematics.

### ASSESSMENTS

Vocational courses are  
assessed by coursework and  
examinations; check the  
details of each course on our  
website to determine if this is  
the right pathway for you.

### NEXT STEPS

This pathway could lead to:

▶ an Engineering  
apprenticeship ▶ a  
foundation degree in  
Engineering ▶ an  
Foundation Year / Year

BTEC NATIONAL EXTENDED CERTIFICATE

**Enterprise &  
Entrepreneurship**

BTEC NATIONAL EXTENDED CERTIFICATE

**Information Technology**

EXTENSION PROGRAMME

**Mathematics for Life**

### ENRICHMENT

EXTENSION PROGRAMME

## TABLE FOR

EPQ

WHY NOT ADD...

### Short Courses

in Fire Safety, Risk Assessment,  
and Emergency First Aid

Sport Academy

# HEALTH & CARE

## PROGRAMME OF STUDY

Students with an interest in care professions with an BTEC NATIONAL EXTENDED  
CERTIFICATE average GCSE grade of 6 or B **Health and Social Care** and  
below.

## ASSESSMENTS

A LEVEL

Vocational courses are **Sociology** assessed by coursework and  
examinations; check the CHOOSE ONE FROM THE OPTIONS BELOW\*  
details of each course on our

website to determine if this is the right pathway for you. BTEC NATIONAL EXTENDED

CERTIFICATE **Applied Psychology**

A LEVEL

**Psychology**

## NEXT STEPS

This pathway could lead to:

- ▶ a **Level 4 Foundation Degree** in Childcare
- ▶ a **Higher National Diploma (HND)** in Healthcare
- ▶ an **apprenticeship**

EXTENSION PROGRAMME

**Mathematics for Life**

ENRICHMENT

# TABLE FOR

in Care /Teaching  
PROGRAMME **EPQ**

Assistant

EXTENSION

- ▶ a Nursing **degree**  
**apprenticeship**

## Short Courses

in Sign Language, HeartStart,

## CAREER PROSPECTS

and Emergency First Aid

- ▶ Armed Forces Combat  
Medical Technician
- ▶ Nursing
- ▶ Social Work

## WHY NOT ADD...

## Volunteering

*\*Please note, some health professions, such as Nursing, require A Level Psychology or Biology.  
Please see Careers if you have a specific job in mind.*

# PERFORMING ARTS

## SUITABLE FOR

Experienced performers who have a grade 5 or B in GCSE English Literature or a combination of grade 4 or C and grade 5 or B in GCSE English Literature and GCSE Drama.

## ASSESSMENTS

Vocational courses are assessed by coursework and examinations; check the details of each course on our website to determine if this is the right pathway for you.

## NEXT STEPS

This pathway could lead to:

- ▶ auditioning for **Drama Schools and Conservatoires**
- ▶ a **degree** in Drama or Performing Arts
- ▶ a **foundation year/year zero course**

## CAREER PROSPECTS

- ▶ Acting
- ▶ Stage Management
- ▶ Theatrical Design
- ▶ Journalism

## PROGRAMME OF STUDY

BTEC NATIONAL EXTENDED CERTIFICATE

**Performing Arts (Musical Theatre)**

BTEC NATIONAL EXTENDED CERTIFICATE

**Dance**

CHOOSE ONE FROM THE OPTIONS BELOW

A LEVEL

**Drama & Theatre**

A LEVEL

**English Language**

## ENRICHMENT

**Performing Arts Academy**

**Upstage Productions**

**Student Voice Newspaper**

**WHY NOT ADD...**

EXTENSION PROGRAMME

**EPQ**

▶ Armed Forces

**PROGRAMME OF STUDY**

# SPORT

## SUITABLE FOR

Active students with 5 or more GCSEs A-C or 9-4 including Maths and English.

## ASSESSMENTS

Vocational courses are assessed by coursework and examinations; check the details of each course on our website to determine if this is the right pathway for you.

## NEXT STEPS

This pathway could lead to:

- ▶ an **apprenticeship** in Supporting Physical Education & School Sport
- ▶ a **degree** in Sport Coaching
- ▶ an **NVQ Level 2** Gym Instructor followed by an **NVQ Level 3** in Personal Training

## CAREER PROSPECTS

- ▶ Coaching
- ▶ Policing
- ▶ Sport Media

BTEC NATIONAL EXTENDED CERTIFICATE

**Sport**

CHOOSE ONE FROM THE OPTIONS BELOW

A LEVEL      A LEVEL **Statistics**

**Business**      A LEVEL      A LEVEL  
**Geography Psychology**

CHOOSE ONE FROM THE OPTIONS BELOW

BTEC      BTEC

**Dance**      **Health & Social Care**

BTEC      BTEC

**Applied Psychology**      **Travel & Tourism**

EXTENSION PROGRAMME

**Mathematics for Life**

**ENRICHMENT**

**Sport Academy**

**WHY NOT ADD...**

# SPORT SCIENCE

## SUITABLE FOR

Students with 5 or more GCSEs A-C or 9-4 including Maths, English and Science.

## ASSESSMENTS

Vocational courses are assessed by coursework and examinations; check the details of each course on our website to determine if this is the right pathway for you.

## NEXT STEPS

This pathway could lead to:

- ▶ an **apprenticeship** in the Fitness & Leisure industry ▶ a **degree** in Sport & Exercise Science
- ▶ an **NVQ Level 2** Gym Instructor followed by an **NVQ Level 3** in Personal Training

## CAREER PROSPECTS

- ▶ Coaching
- ▶ Personal Trainer
- ▶ Sport Media
- ▶ Armed Forces

BTEC NATIONAL DIPLOMA

**Sport and Exercise Science**

CHOOSE ONE FROM THE OPTIONS BELOW

A LEVEL

A LEVEL **Statistics**

**Business** A LEVEL A LEVEL  
**Geography Psychology Applied Psychology**

BTEC NATIONAL EXTENDED CERTIFICATE

EXTENSION PROGRAMME

**Mathematics for Life**

## ENRICHMENT

**Sport Academy**

**Coaching Qualification**

**WHY NOT ADD...**



## Short Courses

in HeartStart, Risk Assessment, and Emergency First Aid

Diploma (HND)

## CAREER PROSPECTS

- ▶ Hospitality Manager

# TRAVEL & TOURISM

## SUITABLE FOR

Students with an interest in travel, tourism, customer service, or business, with a grade 4 or C and above in GCSE English.

## ASSESSMENTS

Vocational courses are assessed by coursework and examinations; check the details of each course on our website to determine if this is the right pathway for you.

## NEXT STEPS

This pathway could lead to:

- ▶ an **apprenticeship** in Events, Business, Aviation, or Transport.
- ▶ a **foundation degree** in Travel and Tourism, Leisure, Events, or Aviation.
- ▶ a Business related **degree**
- ▶ a **Higher National**

- ▶ Resort Representative
- ▶ Cabin Crew
- ▶ Outdoor Activity Leader

## PROGRAMME OF STUDY

BTEC NATIONAL EXTENDED CERTIFICATE

### Travel and Tourism

CHOOSE ONE FROM THE OPTIONS BELOW

BTEC NATIONAL EXTENDED CERTIFICATE

### Enterprise and Entrepreneurship Business

A LEVEL

CHOOSE ONE FROM THE OPTIONS BELOW

BTEC NATIONAL EXTENDED CERTIFICATE

### Information Technology Geography Sociology French / German / Spanish

A LEVEL

A LEVEL

A LEVEL

## ENRICHMENT

EXTENSION PROGRAMME

**EPQ**

**Duke of Edinburgh's Gold  
Award**

**WHY NOT ADD...**

# KEY DATES

## **APPLICATIONS**

Online applications for 2021 entry will be accepted from October 2020 through to 12th February 2021.

## **OPEN EVENTS**

Wednesday 10th February 2021

5.30pm - 8.00pm

Thursday 22nd April 2021

5.30pm - 7.30pm

## **GCSE RESULTS DAY**

27th August 2021

## **ENROLMENT**

1st and 2nd September 2021

## **INTERVIEWS**

Your interview will be held after the College has received your application; this tends to be between February and June.

## **TASTER DAYS**

We will invite you to one of these  
taster days to experience courses and  
College life.

Year 11- February 2021

Year 10 - July 2021

**OUTSTANDING EXAMINATION RESULTS WIDEST**

**CHOICE OF SUBJECTS**

**FANTASTIC EXTRA-CURRICULAR OFFER**

**OUTSTANDING SUPPORT AND GUIDANCE**

**EASILY ACCESSIBLE**

**OFSTED OUTSTANDING IN ALL AREAS**

**STUDENTS FEEL SUPPORTED, ACHIEVE EXCELLENT  
RESULTS, AND ENJOY BEING AT COLLEGE**

**THE COLLEGE HAS AN EXCELLENT NATIONAL  
REPUTATION**



**Hereford Sixth Form College**  
Folly Lane, Hereford, HR1 1LU  
T: 01432355166 E: [sixth-form@hereford.ac.uk](mailto:sixth-form@hereford.ac.uk)